

# Greystone Madison, WI

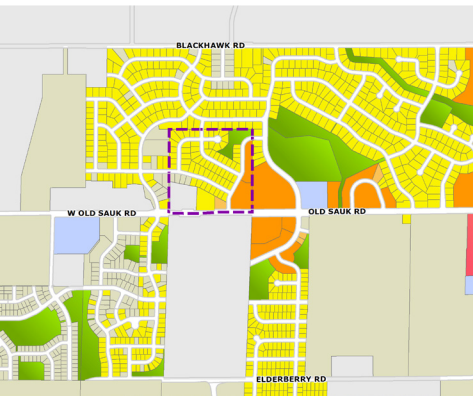
1 Park 

10 Minutes to West Towne Mall 

5 Minutes to Beltline 



The homes in Greystone are nestled up against the Blackhawk subdivision just north of Old Sauk Road on Madison's far west side. This picturesque community features plenty of green space and newer construction homes built since 2005. Most homes in the neighborhood sell for above \$400,000. Greystone real estate offers a convenient location. Many shops and restaurants are only a short drive away down Old Sauk Road. Residents participate in the Middleton School District.



## Schools

Pope Farm Elementary  
645 Schewe Rd

Kromrey Middle School  
7009 Donna Dr

Middleton High School  
2100 Bristol St

Mad City Dream Homes, RE/MAX Preferred  
1619 Monroe St, Suite 1  
Madison, WI 53711